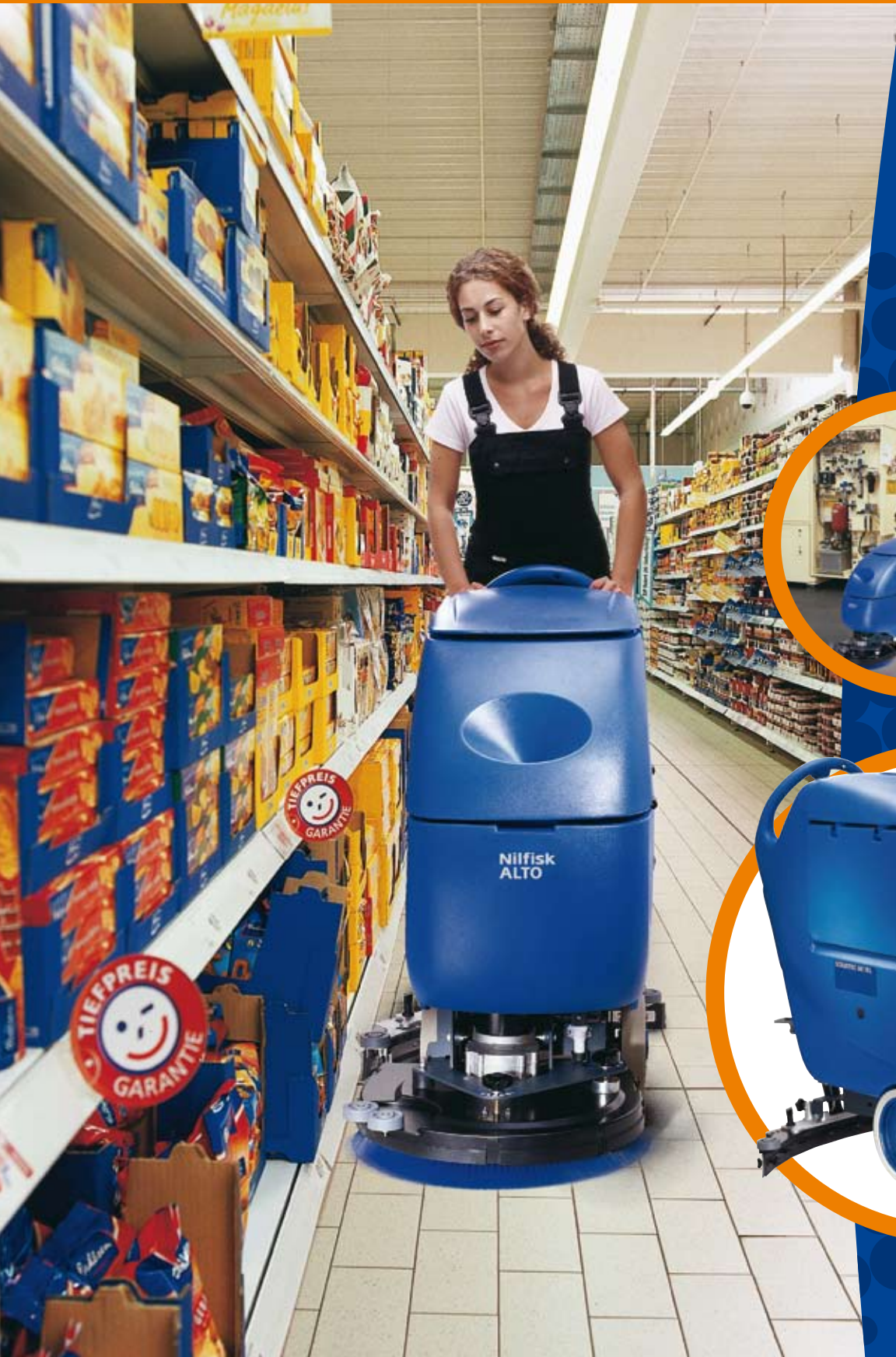


# SCRUBTEC 545/553/651/653/661 – WHY COMPROMISE

## Nilfisk ALTO

*Why Compromise*



# A simply superior range of scrubber dryers



Easy access to clean the recovery tank

This new SCRUBTEC range of walk-behind scrubber dryers represents a modern, practical approach to effective floor cleaning. Through its policy of maintaining an ongoing dialogue with its customers, Nilfisk-ALTO designs machines with features that users actually want and need. Nothing more, nothing less.

This is why the SCRUBTEC 5 & 6 series is not loaded down with fancy bells and whistles that engineers love but which customers don't need. All units in this range are built to the highest quality standards, but are simple to operate, easy to use, and available at a sensible price. In other words, the features that matter are there, the needless frills aren't.

This exciting SCRUBTEC range offers fast cleaning, effective cleaning, and inexpensive cleaning. Highly productive, these units produce a fast return on investment and represent the best value for money in walk-behind scrubber dryers.

## Focus on productivity

- No tools required to change squeegee blades
- Simple, 'one-touch' dashboard control means fewer operator errors
- Large access to recovery tank speeds up cleaning time
- Easy-fill tank system allows the machine to be filled from nearest available water supply

## Focus on ergonomics

- Exceptionally low noise level allows the units to be used anytime, even in noise sensitive areas
- Excellent line of sight
- Automatic brush on/off feature eliminates the need to manually change brushes
- Ergonomic handle with large palm switches

## Focus on reliability

- Durable polyethylene body lasts longer with less maintenance
- Floating brush deck, large wheel traction, waterproof electrical control box and 'extra-step' design quality ensure reliability and longer machine life

## Focus on efficiency

- Interchangeable brush decks with 3 disc sizes (45, 53 & 61 cm) or 51 cm cylindrical
- Adjustable scrubbing pressure provides the best results under all conditions
- Large non-marking wheels for easy turning and use on any kind of floor
- Large range of accessories to 'custom-fit' the machine for individual needs
- Options include on-board battery charger and chemical mixing system



Optional chemical mixing system

Ergonomic handle and easy to understand control panel

# The right answer

...for easy, efficient floor cleaning in hospitals, retail outlets, manufacturing plants, car dealers, garages, warehouses, restaurants, hotels, and wherever it is important that floors be kept clean.



# The best value



# Always the right machine for your needs

This new SCRUBTEC range of walk-behind scrubber dryers from Nilfisk-ALTO is available in different versions. The interchangeable brush deck allows the choice of three different disc sizes, 45 cm, 53 cm or 61 cm, as well as a 51 cm cylindrical brush. Select the one that best fits your particular situation and add the appropriate accessories to custom-fit the unit for your needs.



## Options:

- on-board battery charger
- chemical mixing system
- various pads for different applications
- a range of brushes for heavy or light cleaning
- hour meter kit
- different squeegee blades

B for Battery, E for Electric/Cable

| TECHNICAL DATA:                                | SCRUBTEC 545 E | SCRUBTEC 545 BL | SCRUBTEC 553 E | SCRUBTEC 553 BL |
|--|----------------|-----------------|----------------|-----------------|
| Cleaning width mm/In                           | 450/18"        | 450/18"         | 530/21"        | 530/21"         |
| Squeegee width mm                              | 760            | 760             | 760            | 760             |
| Theoretical capacity 4km/h m <sup>2</sup> /h   | 1800           | 1800            | 2120           | 2120            |
| Tank capacity, Solution/Recovery l             | 42/42          | 42/42           | 42/42          | 42/42           |
| Power source V-Hz                              | 220/240-50/60  | 24              | 220/240-50/60  | 24              |
| Brush motor power W                            | 1100           | 480             | 1100           | 480             |
| Pressure kg                                    | 30             | 23/33           | 32             | 25/35           |
| Vacuum motor power W                           | 550            | 330             | 550            | 330             |
| Traction motor power W                         | -              | 200             | -              | 200             |
| Speed km/h                                     | -              | 4.5             | -              | 4.5             |
| Dimensions LxWxH mm                            | 1190x510x1050  | 1190x510x1050   | 1220x540x1050  | 1220x540x1050   |
| Weight with batteries kg                       | 176            | 237             | 177            | 238             |
| <b>STANDARD EQUIPMENT:</b>                     |                |                 |                |                 |
| Squeegee                                       | Yes            | Yes             | Yes            | Yes             |
| 2 x cylindrical brush                          | No             | No              | No             | No              |
| Battery (Combi versions only)                  | No             | Yes/No          | No             | Yes/No          |
| On board charger (OBC and combi versions only) | -              | Yes/No          | -              | Yes/No          |
| Brush (E and Combi versions only)              | Yes            | Yes/No          | Yes            | Yes/No          |

| TECHNICAL DATA:                                | SCRUBTEC 651 BCL | SCRUBTEC 653 E | SCRUBTEC 653 BL | SCRUBTEC 661 BL |
|--|------------------|----------------|-----------------|-----------------|
| Cleaning width mm/In                           | 510/20"          | 530/21"        | 530/21"         | 610/24"         |
| Squeegee width mm                              | 760              | 760            | 760             | 810             |
| Theoretical capacity 4km/h m <sup>2</sup> /h   | 2040             | 2120           | 2120            | 2440            |
| Tank capacity, Solution/Recovery l             | 55/55            | 55/55          | 55/55           | 55/55           |
| Power source V                                 | 24               | 220/240-50/60  | 24              | 24              |
| Brush motor power W                            | 2x400            | 1100           | 480             | 2x350           |
| Pressure kg                                    | 32               | 34             | 25/40           | 27/42           |
| Vacuum motor power W                           | 330              | 550            | 330             | 330             |
| Traction motor power W                         | 200              | -              | 200             | 200             |
| Speed km/h                                     | 5.6              | -              | 5.6             | 5.6             |
| Dimensions LxWxH mm                            | 1250x570x1090    | 1320x540x1090  | 1320x540x1090   | 1310x650x1090   |
| Weight with batteries kg                       | 257              | 186            | 254             | 255             |
| <b>STANDARD EQUIPMENT:</b>                     |                  |                |                 |                 |
| Squeegee Yes                                   | Yes              | Yes            | Yes             |                 |
| 2 x cylindrical brush                          | Yes              | No             | No              | No              |
| Battery (Combi versions only)                  | Yes/No           | No             | Yes/No          | Yes/No          |
| On board charger (OBC and combi versions only) | Yes/No           | -              | Yes/No          | Yes/No          |
| Brush (E and Combi versions only)              | Yes              | Yes            | Yes/No          | Yes/No          |

Battery versions of SCRUBTEC 545, 553 and 653 are available with and without traction drive



The Nilfisk-ALTO brand is owned by Nilfisk-Advance A/S, one of the leading professional cleaning equipment companies in the world, with a turnover of Euro 789 million and 4.900 employees.

Our headquarters is in Denmark and we have sales companies in all main European countries, North America and Asia. Our manufacturing facilities are in Hungary, China, Italy, the USA, Singapore, Denmark and Germany.

We supply quality high pressure washers, vacuum cleaners and floor care equipment to agriculture, automotive and industrial companies, cleaning contractors and private consumers.

With the Nilfisk-ALTO brand we focus on innovation and growth. We believe in developing and maintaining long lasting relationships with our customers, suppliers and employees.

No claims can be made on the basis of information or illustrations contained in this catalogue. Subject to alteration of technical data, design and equipment.

Distributed by:

Nilfisk-ALTO  
Division of Nilfisk-Advance A/S  
[www.nilfisk-alto.com](http://www.nilfisk-alto.com)

# Nilfisk ALTO

Why Compromise